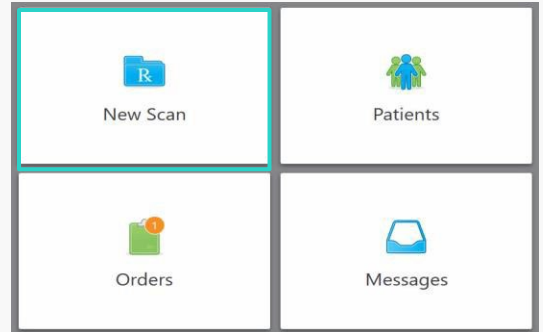


Implant workflow with iTero Lumina™ scanner

These steps can be completed for an implant workflow.

01 Select New Scan

Tap **New Scan** to start.



02 Complete the Rx

- 1 Fill in the patient's name, date of birth, and chart number.

A screenshot of a 'Patient:' form. At the top right, there is a blue pencil icon and a 'Clear' button. The form contains several input fields: 'First Name:' with the text 'Test', 'Last Name:' with the text 'Test', 'Date of Birth:', 'Gender:' with radio buttons for 'Male' and 'Female' (the 'Female' option is selected), and 'Chart Number:'. A red box highlights the 'First Name', 'Last Name', and 'Date of Birth' fields.

- 2 In the procedure field drop-down, select **Fixed Restorative**. Then, select the partnered lab or MyiTero.com account for fabrication. The due date is optional, however specify if you are sending it directly to the lab.

A screenshot of an 'Order:' form. It features a 'Procedure *' dropdown menu with 'Fixed Restorative' selected, a 'Type' dropdown menu, a 'Due Date:' field with a calendar icon, and a 'Send to' dropdown menu. A red box highlights the 'Procedure *' dropdown menu.

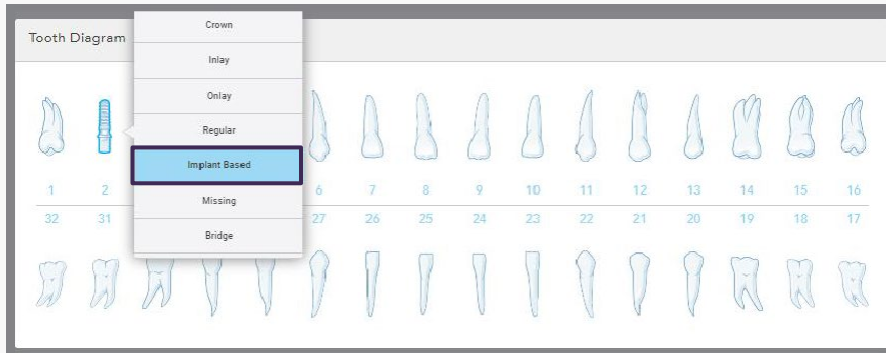
- 3 Toggle the Pre-Treatment scan if needed. The Pre-Treatment scan can be used as an emergency profile.

A screenshot of a 'Scan Options:' form. It contains four toggle switches: 'NIRI Capture:', 'New Sleeve Attached:', 'Pre-Treatment Scan:', and 'Multi-Bite:'. The 'Pre-Treatment Scan:' toggle is highlighted with a red box.

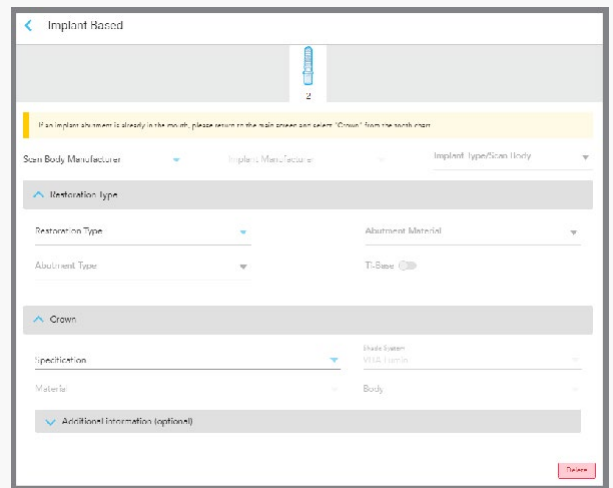
Implant workflow with iTero Lumina™ scanner

02 Complete the Rx - cont.

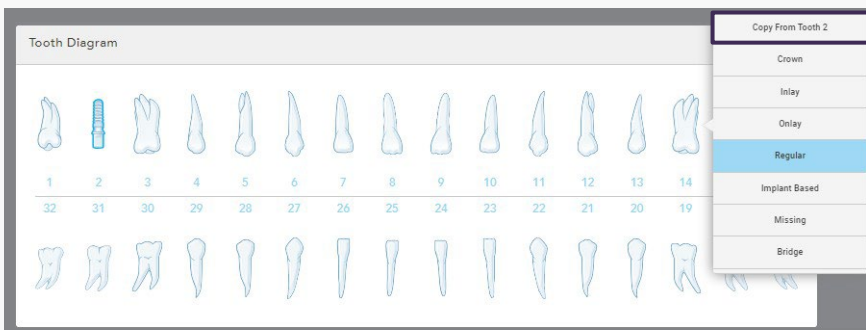
- 4 Tap the relevant tooth on the tooth diagram and select **Implant Based** from the drop-down menu.



- 5 Select all the relevant information about the crown, including scan body manufacturer, restoration type, specification and additional information, if needed.




- 6 When scanning for multiple implants, you can select Copy From Tooth XX (select tooth number) to copy the information



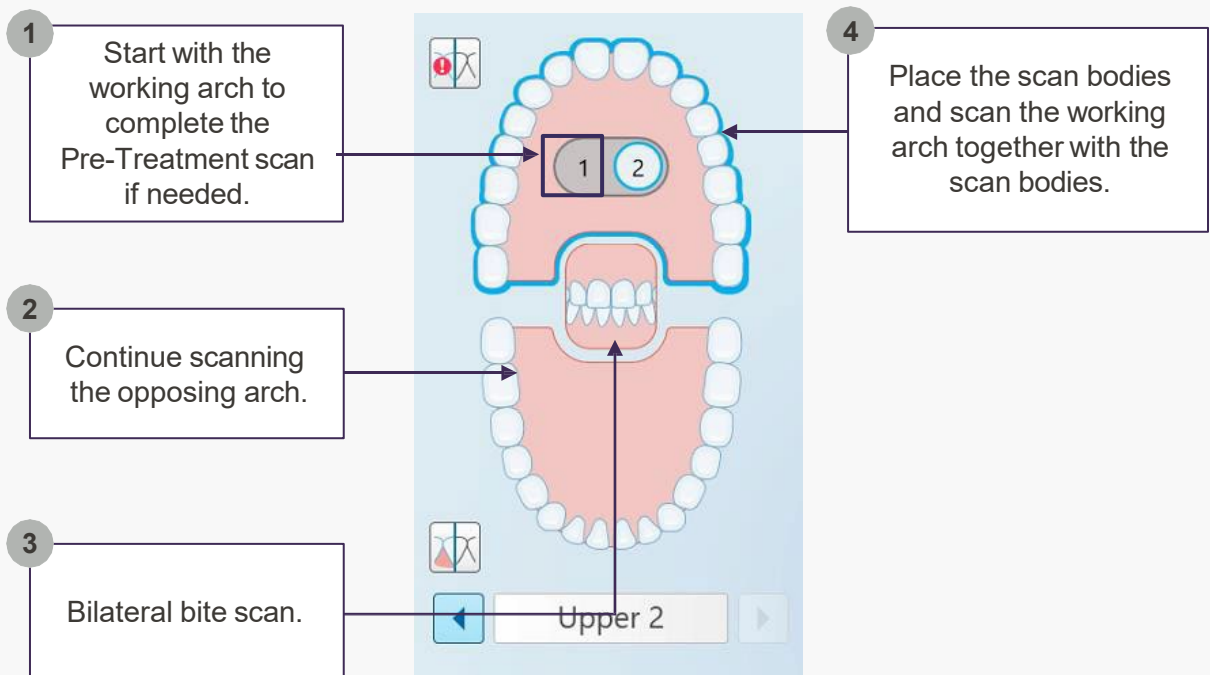
- 7 Upload the attachments from MyiTero.com, if needed. And add any additional notes relevant to your lab.

Implant workflow with iTero Lumina™ scanner

03 Scan mode

Tap the wand icon  in the upper part of the screen to move to the scan mode.

Scan the patient following the steps below. Tap each segment/jaw in the right part of the screen to move between the stages.



Note:

- If the case of adjacent scan bodies or multiple implant with the same scan body, use the prep editing tool to rescan the areas of interest.
- if any additional scans are needed to complete the implant case, use the Duplicate scan feature.

* Watch scanning with iTero Lumina™ scanner video to learn more about scanning the arches and the bite.

Implant workflow with iTero Lumina™ scanner

Before moving to the view mode



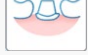

The trim tool can be used to remove excess soft tissue around the model.



Make sure you reviewed the model in color and monochrome mode to ensure that all the relevant surfaces were captured.




Use the prep editor to adjust the prep only if needed by following these steps:

- 1 Tap the prep editor icon  above the viewfinder.
- 2 Tap Select  and circle the area to be rescanned.
- 3 Rescan the area and make sure all the surfaces and the margin line have been scanned correctly. For multi preps, you can rescan prep by prep or select several preps and scan them simultaneously.

04 View mode



Tap the view icon  in the upper part of the screen to move to the view mode.



Check the occlusal relationship with iTero™ Occlusogram to make sure the patient bites down all the way.

05 Send mode



Send the completed scan.

