

Scanning techniques to optimize your workflow with the iTero Lumina™ scanner

Encountering challenging scanning scenarios?

This guide provides targeted techniques to address three common scanning scenarios that may arise when using the iTero Lumina scanner with different patient anatomies and clinical situations. Use these to ensure consistent, high-quality scans that support precise orthodontic appliance production.

01 Flexible scanning distance technique

Why?

Varying your scanning distance gives you flexibility to capture different areas effectively. For example, use distanced scanning to capture multiple teeth at once, and close scanning for a detailed view of crowding at the anterior teeth.

How?

Close scanning: Position scanner near or touching teeth.

- Best for detailed capture of specific areas.
- Useful in anterior regions.



Distanced scanning: Hold scanner slightly away from teeth.

- Captures a wider field of view.
- Useful in hard-to-reach posterior regions.



When?

Choose distance based on area accessibility, patient comfort, and personal preference.

Scanning techniques to optimize your workflow with iTero Lumina™ scanner

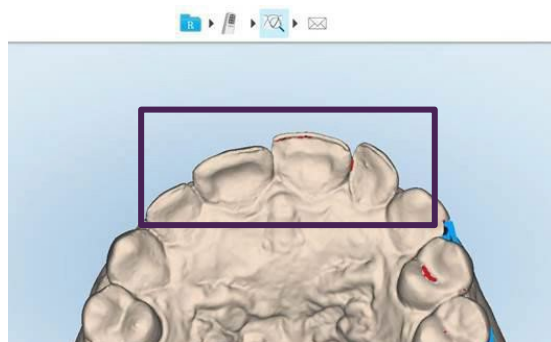
02 Incisal edge technique

Why?

A complete and accurate scan of the incisal edge will help to prevent distortion of the anterior teeth, which is crucial for the proper fit of an appliance.

How?

- Focus on the incisal edge area and hover the wand if needed.
- Switch to monochrome view in post-processing to verify comprehensive incisal edge capture.



When?

Ensure you have scanned the incisal edge during the occlusal sweep and re-scan the area if necessary.

03 Terminal molar technique

Why?

The following three techniques can be used to navigate anatomical challenges, such as limited mouth opening and low cheek tissue elasticity, when capturing the distal of the molars.



Scanning techniques to optimize your workflow with iTero Lumina™ scanner

03 Terminal molar technique (cont.)

How?

Rocking motion technique

- Position the wand tip above the occlusal surface of the terminal molar.
- Rock the wand base away and toward the patient to capture the distal molar.

This technique may be challenging for patients with restricted mouth openings.



Buccal roll and tilt techniques

- Keep the wand steady and parallel to the dental arch or cheek.
- Slide or tilt the wand tip toward the cheek with a slight rolling motion toward the buccal and lingual surfaces.
- Slide or tilt the wand tip toward the cheek to capture buccal surfaces.
- Instruct the patient to move their mandible toward the wand side.

This technique is recommended for patients with low cheek tissue elasticity.



Palatal capture technique

- Use the depth of the palate to capture distal anatomy.
- Position the wand at a 45-degree angle for maximum distal capture.

This technique may be challenging for patients with restricted mouth openings.

